



125

Douglas

Platte River

59

93

91

25

20

94

26

87

0

1/2

1

Yellowstone Hwy.

Riverbend Dr.

Wind River Dr.

Carver

Pearson Rd.

Monroe St.

Leal St.

Lone Tree Dr.

Richards St.

Clay St.

Clay St.

2nd St.

Cedar St.

Walnut St.

Center St.

Oak St.

Elm St.

Pine St.

Ash St.

Birch St.

Hamilton St.

4th St.

6th St.

7th St.

9th St.

Richards St.

Cheyenne

East Antelope Rd.

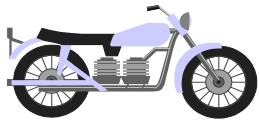
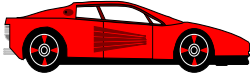
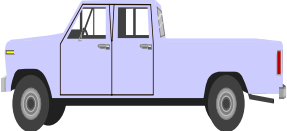
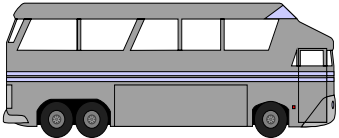

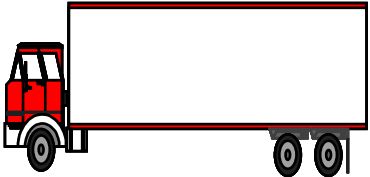
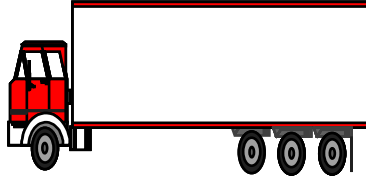
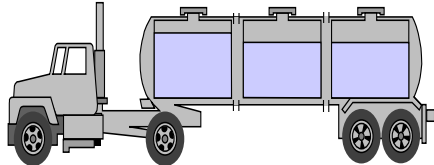
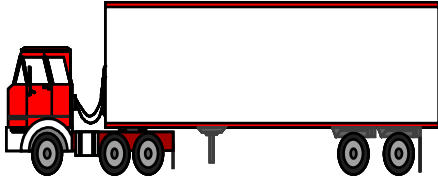
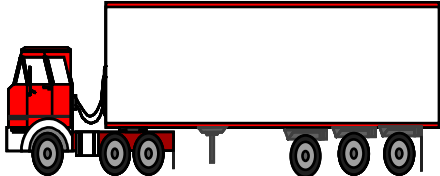
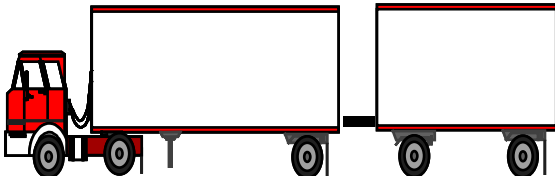
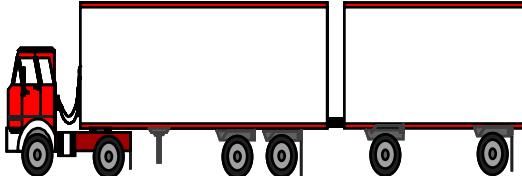
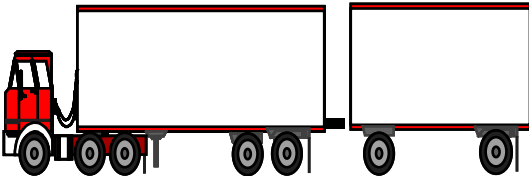
Brownfield Rd.

La Bonte Rd.

Jefferson St.

Robin Ln.

# FHWA VEHICLE CLASSIFICATIONS

<p><b>1</b> Motorcycles</p> 	<p><b>2</b> Passenger Cars</p> 	<p><b>3</b> Two Axle, 4 Tire Single Units</p> 	<p><b>4</b> Buses</p> 
<p><b>5</b> Two Axle, 6 Tire Single Units</p> 	<p><b>6</b> Three Axle Single Units</p> 	<p><b>7</b> Four or More Axle Single Units</p> 	<p><b>8</b> Four or Less Axle Single Trailers</p> 
<p><b>9</b> Five Axle Single Trailers</p> 	<p><b>10</b> Six or More Axle Single Trailers</p> 	<p><b>11</b> Five or Less Axle Multi-Trailers</p> 	
<p><b>12</b> Six Axle Multi-Trailers</p> 	<p><b>13</b> Seven or More Axle Multi-Trailers</p> 		

## *Wyoming Department of Transportation*

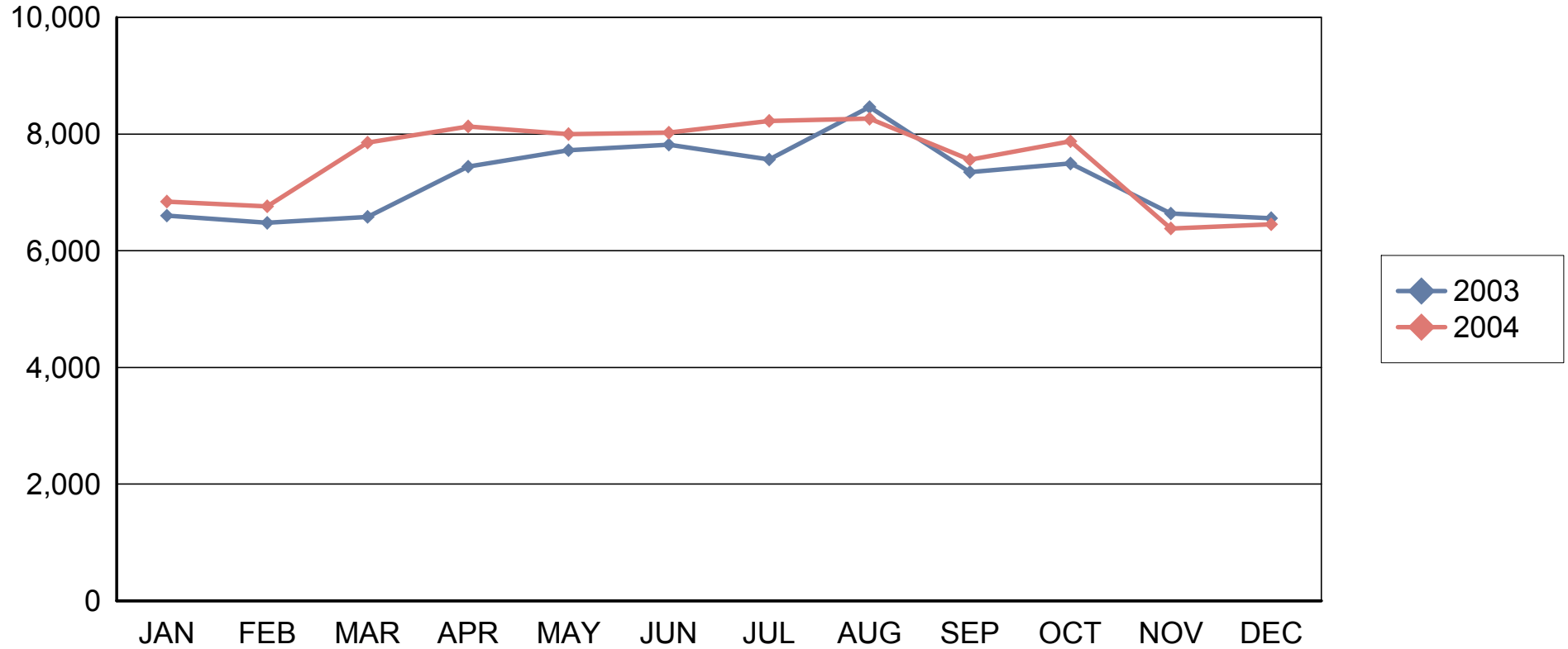
### *Traffic Recorder Data by Month*

<i>Station Number</i>	<i>Location</i>		<i>Milepost</i>		<i>For Calendar Year</i>		
<b>00125E</b>	<b>DOUGLAS CENTER ST.</b>		<b>139.030</b>		<b>2004</b>		
<i>Month</i>	<i>Average SUN</i>	<i>Average MON</i>	<i>Average TUE</i>	<i>Average WED</i>	<i>Average THUR</i>	<i>Average FRI</i>	<i>Average SAT</i>
JAN	4,147	7,294	7,563	7,589	6,935	8,144	5,697
FEB	4,337	7,155	7,530	7,444	7,184	8,276	5,681
MAR	4,644	8,202	8,810	8,791	8,807	9,526	6,669
APR	5,153	8,837	8,838	8,845	8,786	9,153	6,965
MAY	5,495	8,636	8,454	8,611	8,619	9,526	6,901
JUN	5,542	7,849	8,636	8,621	8,951	8,956	7,504
JUL	5,731	8,768	8,622	8,861	9,122	9,216	6,855
AUG	5,793	8,779	8,757	8,861	8,812	9,708	7,745
SEP	4,627	7,421	8,676	8,624	7,595	8,380	6,179
OCT	4,535	8,800	9,265	8,918	9,502	8,019	6,104
NOV	4,060	7,074	7,511	7,541	6,389	7,219	5,285
DEC	4,086	7,175	7,026	6,991	6,878	7,423	5,208
<b><i>Daily Ave</i></b>	<b>4,846</b>	<b>7,999</b>	<b>8,307</b>	<b>8,308</b>	<b>8,132</b>	<b>8,629</b>	<b>6,399</b>

# Wyoming Department of Transportation

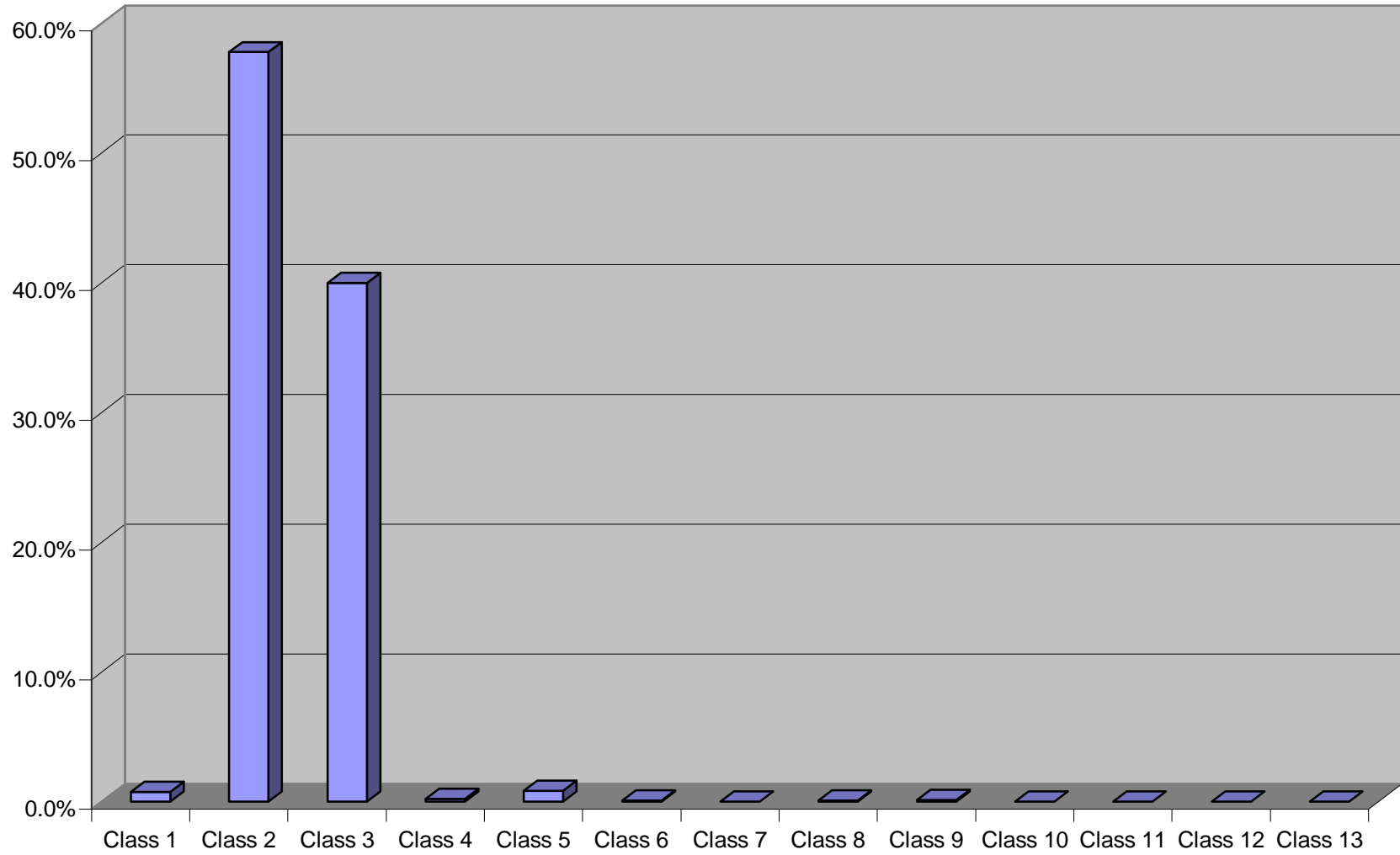
## Compare Monthly Average Daily Traffic

Station Number 00125E Center Street East Of Brownfield Rd



# VEHICLE CLASSIFICATION

ATR Station 125E



## *Wyoming Department of Transportation*

### *Traffic Recorder Data by Month*

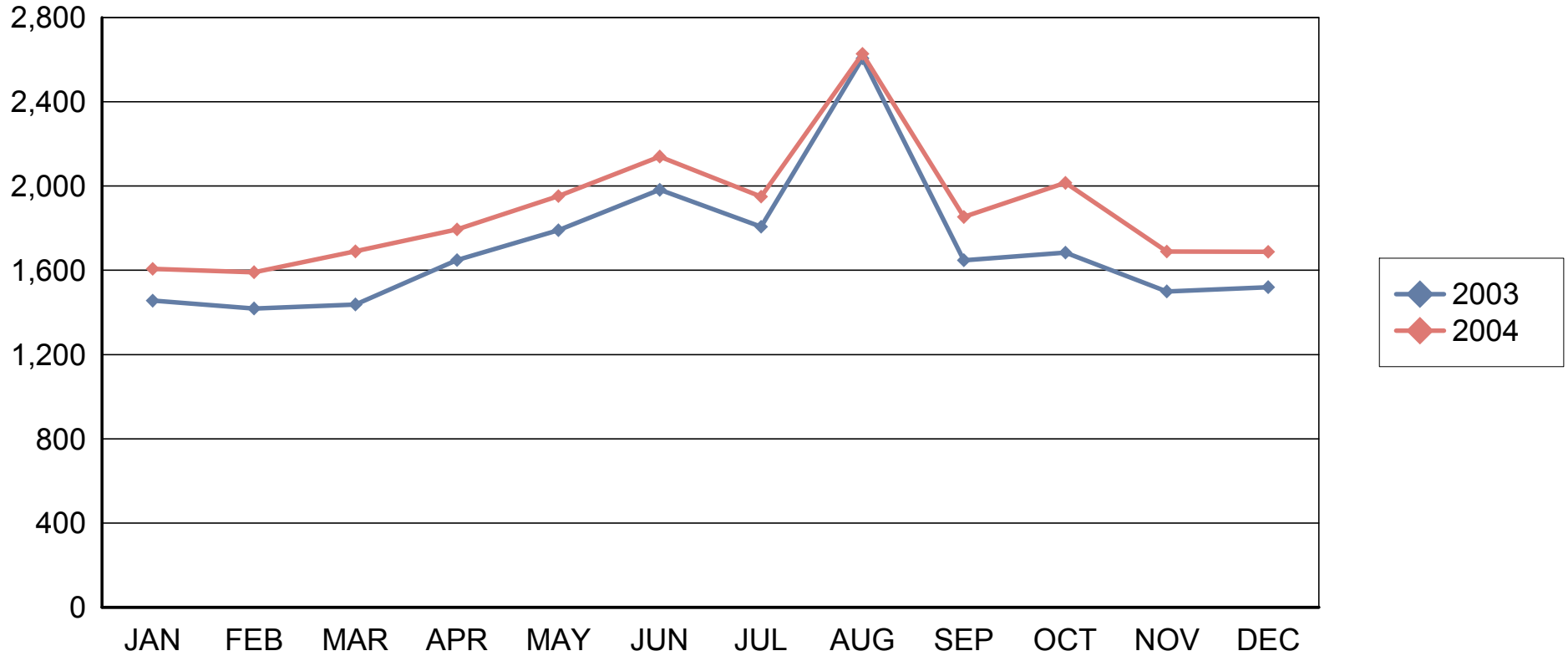
<i>Station Number</i>	<i>Location</i>		<i>Milepost</i>		<i>For Calendar Year</i>		
<b>00125S</b>	<b>DOUGLAS BROWNFIELD</b>		<b>0.040</b>		<b>2004</b>		
<i>Month</i>	<i>Average SUN</i>	<i>Average MON</i>	<i>Average TUE</i>	<i>Average WED</i>	<i>Average THUR</i>	<i>Average FRI</i>	<i>Average SAT</i>
JAN	979	1,785	1,818	1,789	1,669	1,888	1,187
FEB	973	1,755	1,812	1,792	1,807	1,911	1,187
MAR	915	1,830	2,011	1,882	1,965	2,016	1,292
APR	991	2,039	2,044	1,991	1,964	1,977	1,464
MAY	1,164	2,187	2,172	2,162	2,211	2,281	1,601
JUN	1,467	1,904	2,223	2,408	2,506	2,434	2,077
JUL	1,356	1,866	2,131	2,183	2,042	2,316	1,612
AUG	1,939	2,641	2,587	2,749	2,835	3,071	2,720
SEP	1,162	1,688	2,089	2,075	2,029	2,143	1,474
OCT	1,237	2,203	2,284	2,243	2,250	2,294	1,575
NOV	1,077	1,939	2,061	2,014	1,743	1,831	1,248
DEC	984	1,987	1,861	1,848	1,879	1,879	1,244
<i>Daily Ave</i>	<b>1,187</b>	<b>1,985</b>	<b>2,091</b>	<b>2,095</b>	<b>2,075</b>	<b>2,170</b>	<b>1,557</b>

# Wyoming Department of Transportation

## Compare Monthly Average Daily Traffic

Station Number 00125S

Brownfield Rd South Of Center Street



# VEHICLE CLASSIFICATION

ATR Station 125S

